

# AUTO-LIFT

## INSTALLATION INSTRUCTIONS

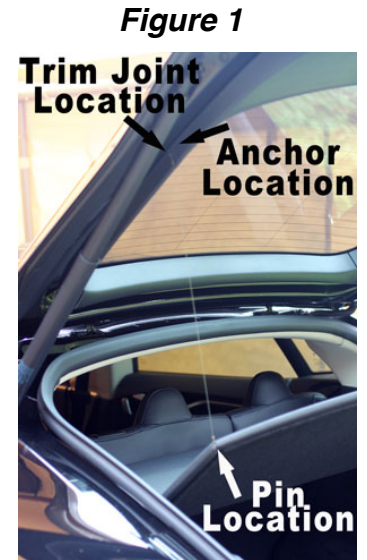
Thank you for purchasing the auto-lift kit for the Tesla Model S parcel shelf. Please read these instructions before installation to insure a quick and correct installation. Installation time is less than 5 minutes and requires no additional tools.

Note: **Figure 1** to the right is presented to help in locating areas referenced. Images are taken using a drivers' side installation and should be mirrored if passenger side installation is desired. Leave the parcel shelf (PS) in the vehicle for installation.

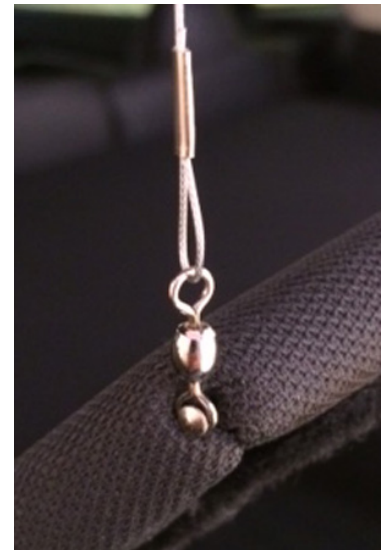
1. Thread the pointed tip of the stainless steel pin through the "eye" of the swivel connector and then insert it directly into the corner of the seam on the side of the PS flap (see **Figure 1** for the general area and **Figure 2** below for a closeup of placement.) Firmly press the pin all the way in until it secures the swivel connector in place as pictured.
3. On the hatch, locate the "bumper" pictured in **Figure 3** and slide the shim between the trim panel and the hatch right over and in-line with the bumper until the shim is forced to stop as pictured in **Figure 4**.
4. Insert the "arch" part of the anchor in the opening created on the left side of the shim as seen in **Figure 5**. Then slide the anchor down the trim piece until it is 1 inch above the joint between the two trim pieces as pictured in **Figures 1 & 6**. Remove the shim and press the trim panel firmly to ensure it is still seated.
5. Lastly, insert the filament connector to the hook part of the anchor by inserting it through the small opening at the top as seen in **Figure 6**. That's it! If you need to remove your PS at anytime, simply disconnect it from the hook on the hatch and it will come out and remain attached to the PS.

\*Note: the filament line may rest on the weather strip when the hatch closes, and this is fine. As designed, it will not protrude from the vehicle hatch at any time. The braided line has a nylon coating on it to protect your paint and ensure the weather strip can create a tight seal even if it lays on it.

Please email [info@gqtesla.com](mailto:info@gqtesla.com) if you have any questions or need support.



**Figure 2**



**Figure 3**

**Figure 4**

**Figure 5**

**Figure 6**

